

# Talismans and Amulets

Written by Adrienne

## Amulets

“Amulets are more general and less time specific than a talisman. They are used to encourage luck, health, wealth, strength of purpose etc.” (Philips, J. & Sandow. M. *Witches of Oz*)

They are often made of jewellery, wood, metal – more permanent materials. They are worn or kept somewhere for an unspecified period of time. For example, Locketts can make good containers for amulets.

Amulets incorporate symbols and colour correspondences to represent its purpose, and are often carved/painted etc on bone, metal, wood, stone.

Examples of the use of amulets include:

- ❖ To promote general luck
- ❖ To promote good health
- ❖ To promote safe passages and journeys
- ❖ For protection of a person or place
- ❖ To ward off illness
- ❖ To ward off danger
- ❖ To keep the wearer safe

## How to Charge an Amulet

*From the Witches of Oz*

- ❖ Create an amulet then cast circle
- ❖ Exorcise any unwanted influence from it
- ❖ State the amulets purpose
- ❖ Wrap and bind the amulet in cloth and cord
- ❖ Show it to the four quarters
- ❖ Energise it and give it live (by removing the bindings and cover)
- ❖ Ask for the blessings for the Goddess and God upon it
- ❖ Ask for the blessings of each quarter guardian in turn
- ❖ Keep in mind throughout the ritual what purpose you want your amulet to achieve
- ❖ Close circle
- ❖ Wear amulet or store in safe location

## Talismans

"A talisman is something that is created for a specific purpose, and for a specific time, it is usually ritually 'born and consecrated' in a circle." (Philips, J. & Sandow. M. *Witches of Oz*). It starts with an intent, something you need, a result you want to obtain.

They are often made of:

- ❖ Ink on plain paper/parchment
- ❖ Embroidered on fabric
- ❖ Painted
- ❖ Engraved
- ❖ Carved
- ❖ Made of a collection of material stored in a pouch

They are worn or kept somewhere for a specific period of time then ritually deconsecrated and returned to the elements.

Examples of the uses of talismans include:

- ❖ To obtain a job
- ❖ To find a home
- ❖ To protect on a journey
- ❖ For success in hunting (various forms)
- ❖ for courage in a specific situation
- ❖ To ward off negativity
- ❖ To understand a particular mystery

Much talisman magic is derived from the *Greater Key of Solomon* including the use of: designs, techniques, lettering (Hebrew), sigils, planetary and elemental correspondences. Making a Wiccan style talisman also includes the symbol of the Goddess and God, and then the symbols that help us plug into the right energy networks for our purpose.

Correspondences are used in both the creation phase of making a talisman as well as in the ritual phase of birthing the talisman.

### Designing a Talisman

#### Determine Purpose of Talisman

Design the purpose of the talisman – what is it that you are trying to achieve?

#### Choose Appropriate Correspondences

Choose the appropriate correspondences for the construction of the talisman and for appropriate sympathetic alignments for greatest success:

- ❖ Elemental alignments (for construction of a talisman, colours, symbols, sympathies and alignments)
- ❖ Planetary correspondences (sympathies and alignments, symbols for use in a talisman, colours, days and hours for construction)
- ❖ Days of the week (for construction and birthing of a talisman)
- ❖ Moon phase (for sympathies and alignments and for construction and birthing a talisman)
- ❖ Sun phase (for sympathies and alignments and for construction and birthing a talisman)
- ❖ Season (for sympathies and alignments and for construction and birthing a talisman)
- ❖ Astrological alignment (for sympathies and alignments, symbols, colours, and for construction and birthing a talisman)

### Choose a Sigil (if desired) to represent the Will of the Talisman

There are many variations on the construction of sigils, but the two most common include use of a magical alphabet or the use of kameas (planetary squares).

#### Kameas

Sigils that use kameas as a basis, are created by placing a word or group of words on the appropriate "square" and plotting the shape and then using the symbol on the talisman. This simple glyph will evoke all the qualities the magician might want, not only in his own psyche but in the universe at large.

"The traditional magical squares or *kameas*, the sigils and hierarchical names that form part of talismanic magic, have come down to us through the works of Abbot Trithemius, Peter de Abano and Cornelius Agrippa. Most of these were reprinted in the famous treatise by Frances Barrett, *The Magus*." (Gonzalez-Wippler, M. (1993). *The Complete Book of Spells, Ceremonies and Magic*)

"...a series of numbers, in a square grid, cunningly arranged so that each row, column and (usually) diagonal adds up to the same number. Each planet has a kamea of increasing complexity, according to its position on the Tree of Life. Saturn has the simplest Kamea, whereas the Moon has the most complex one." (Melville, A. (2002). *The Secrets of High Magic*)

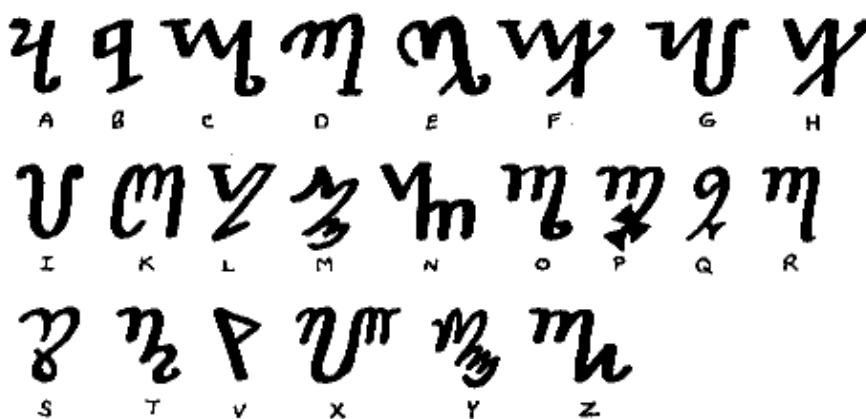
### Magical Alphabets

There are many magical alphabets that can be used, the most common are:

- ❖ Rune
- ❖ Oghams
- ❖ Theban (or Honorian)

#### A Note about Theban Script

"The Theban alphabet is a writing system with unknown origins. It was first published in Johannes Trithemius' *Polygraphia* (1518), in which it was attributed to Honorius of Thebes. Trithemius' student Agrippa (1486-1535) attributed it to Pietro d'Abano (1250-1316). It is also known as the Honorian Alphabet or the Runes of Honorius after the legendary magus (Theban is not, however, a runic alphabet), or the Witches' Alphabet due to its use in modern Wicca and other forms of witchcraft as one of many substitution ciphers to hide magical writings such as the contents of a Book of Shadows from prying eyes. The Theban alphabet bears little resemblance to other alphabets, and has not been found in any previous publications prior to Trithemius'." (Wikipedia)



### **Choose a Symbol (if desired) to Represent the Will of the Talisman**

- ❖ Patterns (based on some of the previous considerations)
- ❖ Runes (for sympathies or symbolically representing the will of the talisman)
- ❖ Oghams (for sympathies or symbolically representing the will of the talisman)
- ❖ Elemental symbols – Alchemical (for sympathies or symbolically representing the will of the talisman)
- ❖ Geometric shapes
- ❖ Goddess and God representations
- ❖ Other symbols

### **Choose a Colour**

Choose a colour/s to represent the talisman on paper (based on any of the previous considerations)

### **Construct the Talisman**

Combine the correspondences into a symbolic talisman that represents your purpose.

Draw the talisman on paper/parchment with tools that have been consecrated (nibs, inks, stylus, parchment)

Choose a cloth to wrap the talisman in with appropriate correspondences.

### **Consecrate the Talisman**

From the Witches of Oz

- ❖ Create a talisman then cast circle
- ❖ Exorcise any unwanted influence from it
- ❖ State the talismans purpose
- ❖ Wrap and bind the talisman in cloth and cord
- ❖ Show it to the four quarters
- ❖ Energise it and give it live (by removing the bindings and cover)
- ❖ Ask for the blessings for the Goddess and God upon it
- ❖ Ask for the blessings of each quarter guardian in turn
- ❖ Keep in mind throughout the ritual what purpose you want your talisman to achieve
- ❖ Close circle

### **Finishing the Work**

Most talismans have a time limit to their work and then the energy should be ritually released at the end of that period.

- ❖ Cast Circle
- ❖ Thank Goddess and God and the elements for blessing this talisman
- ❖ Earth Banishing pentagram saying something like:  
“May all energies contained within this talisman be returned to their place in the universe, in peace and harmony” (Witches of Oz)
- ❖ Then burn talisman and scatter the ashes on the earth
- ❖ Close circle